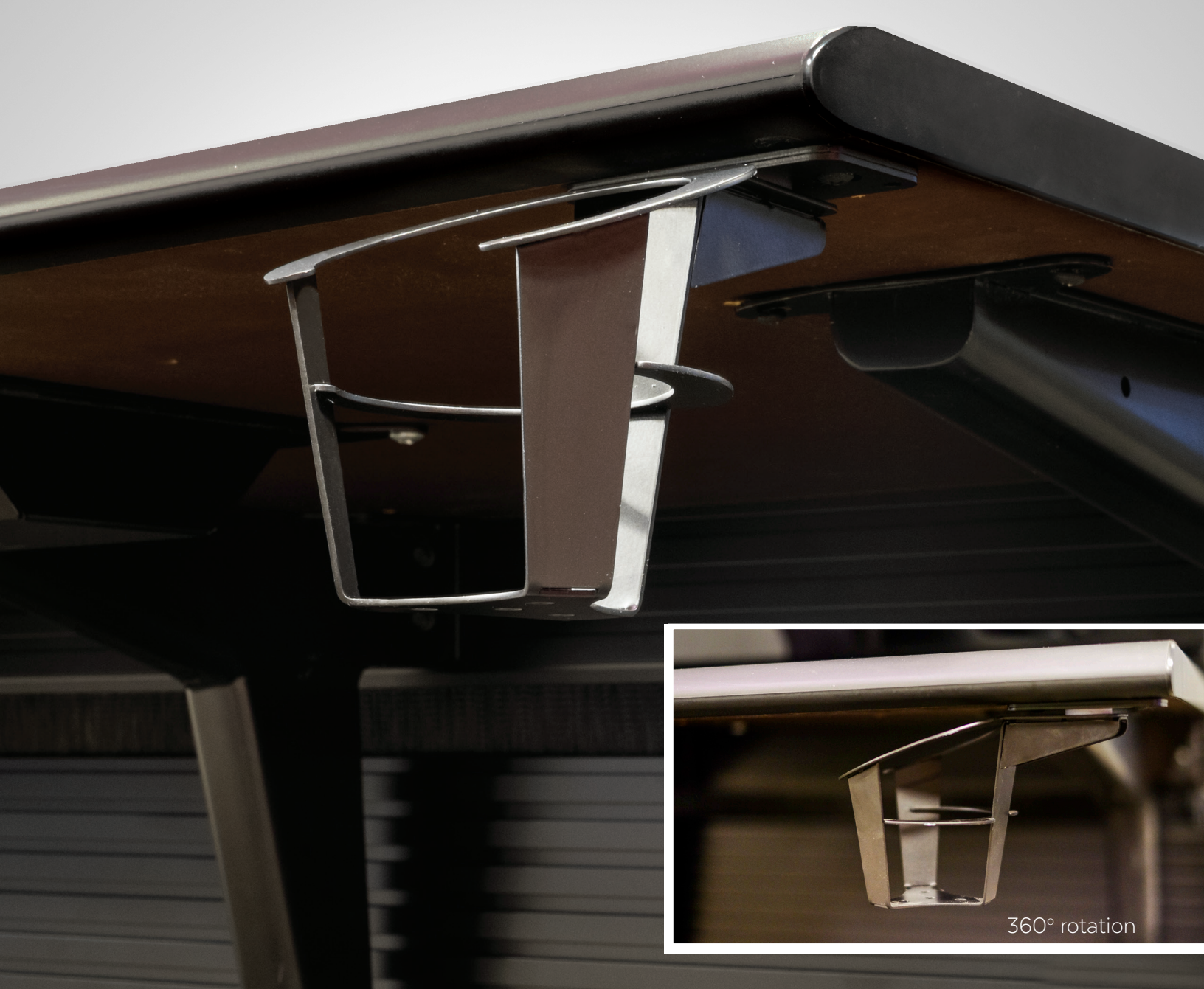


CONSOLE ACCESSORIES CUP HOLDER





CONSOLE ACCESSORIES

CUP HOLDER

Part Number	DAC-CUPHLDR-US-R
Application	Fits disposable beverage containers, travel mugs and traditional ceramic coffee cups up to 3 1/4" diameter
Construction	Welded steel construction with a black powder coated finish
Application	Mounts anywhere under the desk, rotates 360° so it can be tucked out of the way